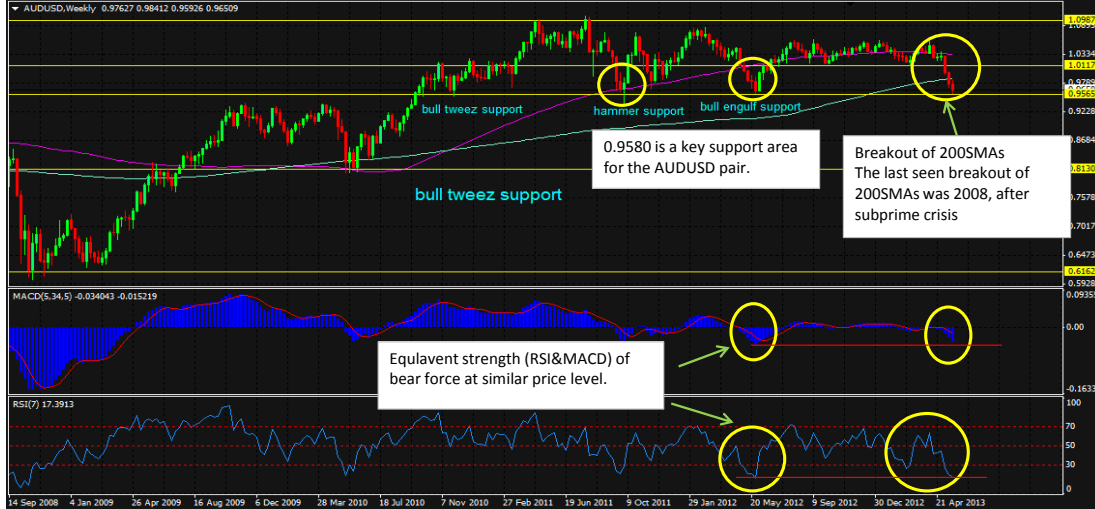


PAIR	AUDUSD	
DATE & TIME	26/5/2013	
CHARTING TIMEZONE	WEEK 22	
TO DO	LONG	
Entry Point: (waiting)	0.9630	0.9600
TP:	0.9850	0.9900
SL:	0.9560	0.9560
RRR:	3.14	7.50
Exit Point:		

Market View:

Although major trend has shown a breakout of previous support level is possible now, but short term wise, we are looking at potential reversal to at least 0.9900 level. Noted that the AUDUSD has been heading south for the past 2-3 weeks, and in addition that the RBA rate cut, Mr. George Soros shorted AUDUSD @ 1.0300 range. Now, it looks like uptrend movement may be coming back soon. All we need is a confirmation for this week, a upwards movement.
 Note: This week is monthly closing. It would mean something to the AUDUSD on how it closes for the week and the month

Weekly view



Daily View



H4 View



H1 View

